



**Dear Friends of the Lac Télé Community Reserve,**

The months of March and April 2026 were marked by the sustained implementation of activities within the Lac Télé Community Reserve, in a context that was both demanding and rich in lessons learned for all teams involved.

Operationally, several notable advances were recorded, particularly in the field of ecological monitoring, with the deployment of wildlife monitoring systems, the continuation of support activities for cocoa farming and beekeeping, as well as infrastructure maintenance and rehabilitation interventions. Efforts undertaken to maintain and improve communication routes, notably through vegetation clearing, are also gradually strengthening connectivity with Reserve's surrounding areas.

From a governance perspective, discussions with administrative authorities helped strengthen institutional coordination and address important issues related to security and the presence of public services in certain strategic localities. These interactions are essential to ensuring a strong territorial presence and greater coherence in interventions.

The actions carried out during this period are fully aligned with the vision of the Lac Télé Community Reserve, which seeks to reconcile biodiversity conservation, the improvement of livelihoods for local communities and Indigenous peoples, and the strengthening of capacities for the sustainable management of natural resources.

The coordination team would like to thank all field teams and partners for their continued commitment, professionalism, and adaptability in what is at times a complex operational context. These joint efforts are essential to consolidating achievements and continuing the implementation of the reserve's objectives.

**The Lac Télé Community Reserve (LTCR) team**



**KEY DATES & HIGHLIGHTS**

- **28 March to 5 April:** Fieldwork in the Kabounga region to test bioacoustic devices in collaboration with the Institute of Vertebrate Biology (Czech Academy of Sciences)
- **31 March to 13 April 2026:** Organisation of focus groups to update the BNS list of goods and services for both local communities and indigenous people
- **2 April 2026:** Donation of a football to the KB Dim team in Epéna (the seventh football team to receive footballs in Epéna centre)
- **2 April 2026:** Start of the vegetation-clearing work on the road between Epéna and PK38
- **3 April 2026:** Coordination support mission to the sub-prefecture of Epéna to assess the establishment of a police station in Dzeke
- **18 April 2026:** Launch of the pilot project for the protection of the Likouala-aux-Herbes gallery forests

**COMMUNITY CONSERVATION**



**Mission to Support Sustainable Beekeeping in Eight Localities of the Reserve**

As part of the continued implementation of activities supporting beekeeping within the Reserve, a field mission was carried out from March 2 to 23, 2026, across the eight (08) beneficiary localities.

The main objectives of this mission were to finalize the distribution of beekeeping production equipment, including buckets, gloves, bee brushes, and hive tools; monitor both colonized and non-colonized hives; and support beekeepers in the use of bee attractants to accelerate hive colonization.

The activities carried out helped strengthen the technical and operational capacities of beekeepers, consolidate the knowledge acquired during previous training sessions, and continue awareness-raising efforts on the importance of developing income-generating activities that are compatible with conservation objectives.

Through this initiative, the Reserve reaffirms its commitment to sustainable livelihoods that contribute to environmental preservation and the sustainable valorisation of local natural resources.



**Missions to Support Cocoa Farming Within the Reserve**

Two field missions dedicated to supporting cocoa farming were carried out within the Reserve between March and April 2026.

The first mission took place from March 24 to April 4, 2026, in the northern part of the Reserve, within the district of Epéna, covering the localities of Mboua, Mobangui, Béné, Toukoulaka, and Minganga.

The second mission was conducted from April 22 to 29, 2026, in the district of Bouanéla, specifically in the localities of Ebambe, Moungouma Moke, Bouanéla, Mossengue and Likonda.

The main objectives of these missions were to provide technical monitoring of the nurseries established within the framework of the project and to visit the plantations of newly identified producers in the targeted localities.

The work carried out will support the selection of producers based on predefined criteria in order to identify beneficiaries who will receive technical assistance, tailored training sessions, and support through the provision of small-scale agricultural equipment.

**GOVERNANCE**



**Between March and April 2026, the Lac Télé Community Reserve continued its efforts to strengthen institutional coordination and local governance through a series of exchanges and working meetings with administrative authorities and technical partners.**

A support mission led by the coordination team of the Lac Télé Community Reserve to the Sub-Prefecture of Epéna made it possible to assess the conditions for the establishment of a police post in Dzeke. This mission facilitated discussions with the relevant authorities on local security challenges and the strengthening of the presence of State services in the area.

At the same time, a major support activity for the Local Management Committee, initiated at the end of February and carried out until March 18, was implemented in 19 villages across the Reserve. This intervention focused on bushfire awareness and the restructuring of the Natural Resources Management Committees (CGRN). It contributed to strengthening community-based environmental governance mechanisms and improving the local management of natural resources.

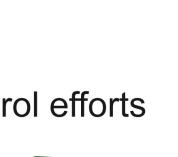
The launch, on April 18, 2026, of the pilot project for the restoration of gallery forests along the Likouala-aux-Herbes River also reflects the commitment to reinforcing synergies among the Reserve's various technical services by mobilizing community, logistical, scientific, and development expertise.

Particular attention was given to activity planning, partnership monitoring, and the strengthening of collaboration among the different stakeholders involved in the management of the Reserve.

Teams also continued the preparation and structuring of several strategic initiatives, particularly those related to the development of sustainable livelihoods, support to the cocoa sector, and environmental monitoring.

**ANTI-POACHING**

**Interpellations**



No arrests

**Saisies**

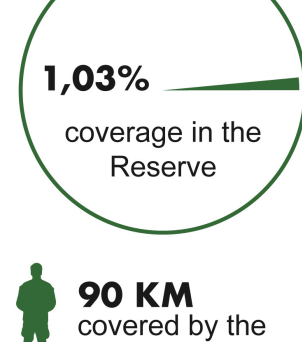
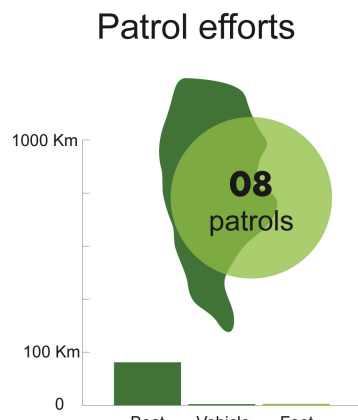
35,75 kg



03



**Patrol efforts**

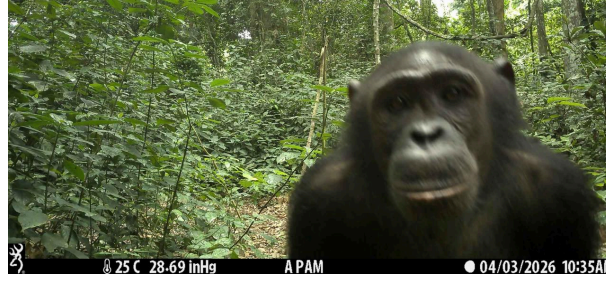


90 KM covered by the eco-guards

From April 8 to 11, 2026, four members of the Anti-Poaching Unit (LAB), namely the Conservator, the Patrol Chief, the Operational Support Officer, and one eco-guard, took part in a workshop dedicated to the mapping of strategic CWT-LAB sectors in Ouesso.

Furthermore, during the month of April, the Anti-Poaching Unit was deeply affected by the passing of an eco-guard who had been on annual leave from April 1 to May 7, 2026. His loss represents a significant blow to all teams engaged in conservation and surveillance activities within the Reserve.

**RESEARCH AND MONITORING**



**Wildlife Monitoring Through Acoustic Devices in the Kabounga Area**

As part of efforts to strengthen ecological monitoring activities, a field mission was carried out from March 28 to April 5, 2026, in the northern sector of the Reserve.

During this mission, four camera traps and four acoustic devices were deployed for one week in order to document the presence of wildlife and test the effectiveness of acoustic equipment for passive biodiversity monitoring.

The data collected are currently being analyzed. However, preliminary results indicate several recordings of chimpanzee vocalizations, confirming their active presence in the area. Very few elephant sounds were detected, despite the observation of numerous recent signs of their presence, including footprints, dung. No gorilla vocalizations have been recorded at this stage, although several signs confirming their presence were also observed during fieldwork.

This northern area of the Reserve (Kabounga lands) is characterized by significant use by local communities and Indigenous peoples and is located near forest concession areas operated by the Congolaise Industrielle des Bois (CIB) for timber production. The camera traps, for their part, only confirmed the presence of chimpanzees during this initial deployment phase.

This mission represents an important pilot step in assessing the use of acoustic tools for wildlife monitoring within the Lac Télé Community Reserve and in guiding future ecological monitoring protocols.

**Launch of a Pilot Project for the Restoration of Gallery Forests Along the Likouala-aux-Herbes**

April 18, 2026, marked the launch of a pilot project dedicated to the protection and restoration of gallery forests along the Likouala-aux-Herbes corridor. This initiative is based on an integrated and collaborative approach involving the coordination, and the community development, research, and logistics teams, with technical support in cocoa farming provided by forest expert Manthe Dorian.

Through close collaboration between technical teams and local assistants, the activities carried out enabled the selection and planting of exclusively native forest species adapted to the ecological conditions of the area. Ultimately, nearly three hectares of savanna are expected to be progressively restored and transformed into a functional forest zone.

This pilot phase aims to test and structure a small-scale ecological restoration approach that can gradually be expanded in the coming years.



The long-term objective is to contribute to the restoration of gallery forests throughout the Likouala River basin.

Gallery forests play a critical role in maintaining the ecological balance of the region. They act as natural barriers against the spread of bushfires, contribute to riverbank stabilization and erosion control, improve water quality, and support conditions favorable for fish reproduction. They also help maintain the navigability of waterways, an important issue for local communities and indigenous people as well as for field operations conducted in the region.

**INFRASTRUCTURE AND CONSTRUCTION**



The road clearing works launched on April 2, 2026, along the Epéna – PK38 road corridor improved visibility and accessibility along nearly 20 kilometers of roadway. The ongoing interventions, including pothole filling and the securing of sensitive sections, are helping to facilitate the movement of local communities and indigenous people, strengthen exchanges with Impfondo, and support the logistical activities of the Reserve. Despite this progress, certain sections remain difficult to access and will require the continuation of rehabilitation works.

**Rehabilitation and Improvement of Infrastructure**

- **PK38 Control Post:** Renovation of door and window openings, as well as the replacement and rehabilitation of mosquito screens in staff housing and at the guard post.
- **Epéna Base:** Repair of the garage hangar roof and improvement works around the garage pit, thereby facilitating mechanical interventions and maintenance operations.
- **Non-food Storage Facility:** Rehabilitation of the access ramp at the entrance of the building in order to facilitate handling operations and ensure safer access for users.
- **Inspection of community solar streetlights:** During March and April, our technician Ephraïm inspected all solar streetlights installed in 2024 and 2025 across 20 villages of the RCLT (cleaning and repairs).

**IN MEMORIAM**



The anti-poaching team was deeply saddened by the passing of eco-guard **Charnel Magnonga**, a member of the Lac Télé Community Reserve since 2018, who passed away while on annual leave.

Recognized for his commitment, professionalism, and contribution to conservation efforts within the Reserve, Charnel Magnonga will be remembered as a dedicated colleague devoted to the protection of natural resources.

The Lac Télé Community Reserve honors his memory and extends its sincere condolences to his family, loved ones, and all his colleagues.



Thank you to our **sponsors and partners.**

Copyright © WCS Congo. All rights reserved.  
151 Av Ch de Gaulle Brazzaville,  
BP 14537 République du Congo